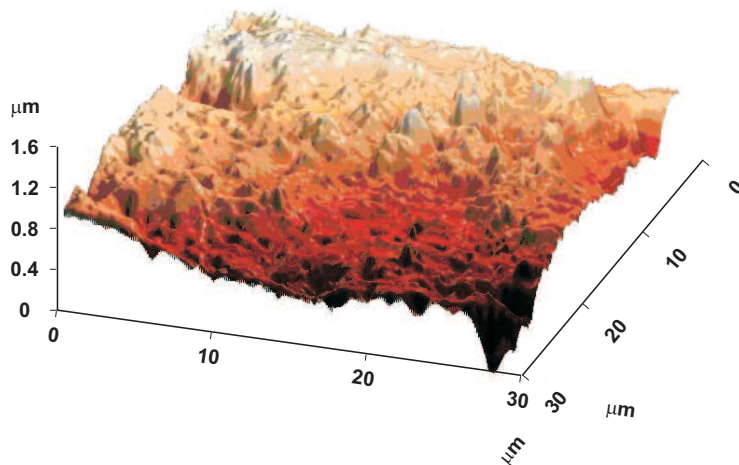
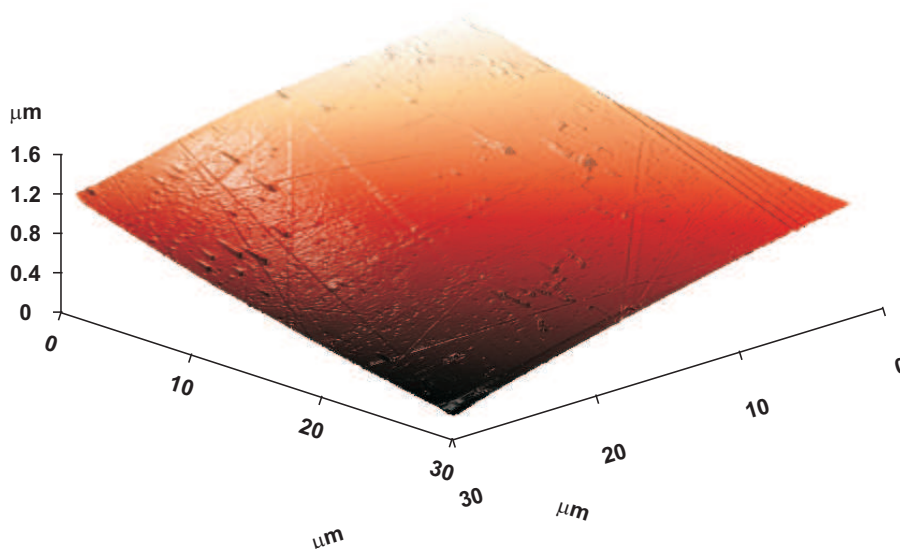


PC TOL[®] CC - ClearCoat

- Tough-elastic behavior
- UV and color stable, very smooth surfaces
- Free of solvents and additives
- Hardness > Shore D 80, no fillers



Standard 2K PU Clearcoat
area: 30 μm x 30 μm



PC TOL[®] CC series sample
area: 30 μm x 30 μm

AFM measured surfaces